



ORIGINALS

Bilingual edition English/Spanish

Serum levels of infliximab and adalimumab are associated with deep remission in inflammatory bowel disease

Los niveles séricos de infliximab y adalimumab están asociados con remisión profunda en la enfermedad inflamatoria intestinal

Óscar Pascual-Marmaneu¹, María D. Belles-Medall¹, Raúl Ferrando-Piqueres¹, Pedro Almela-Notari², María Mendoza-Aguilera¹, Tamara Álvarez-Martín¹

¹Department of Pharmacy, Hospital General Universitario de Castellón, Castellón. Spain. ²Gastroenterology Department, Hospital General Universitario de Castellón. Castellón. Spain.

Author of correspondence

Óscar Pascual Marmaneu
Avda. Hermanos Bou, n.º13, 6.º A
12003 Castellón. Spain.

Email:
oscar_pas69@hotmail.com

Received 19 October 2020;
Accepted 17 May 2021.
Early Access date (08/18/2021).
DOI: 10.7399/fh.11574

How to cite this paper

Pascual-Marmaneu O, Belles-Medall MD, Ferrando-Piqueres R, Almela-Notari P, Mendoza-Aguilera M, Álvarez-Martín T. Serum levels of infliximab and adalimumab are associated with deep remission in inflammatory bowel disease. *Farm Hosp.* 2021;45(5):225-33.

Abstract

Objective: Deep remission defined by clinical-biomarker remission and mucosal healing has emerged as a new therapeutic target in inflammatory bowel disease. The aim of this study was to define an optimal cut-off concentration for infliximab and adalimumab during maintenance therapy associated with deep remission. The secondary objective, was to evaluate the influence of variables on anti tumor necrosis factor-alpha concentrations and deep remission.

Method: Retrospective study including 120 and 122 patients inflammatory bowel disease diagnosed who received maintenance therapy with infliximab and adalimumab. Biomarker remission was considered by C-reactive protein < 5 mg/L and fecal calprotectin < 100 µg/g. Crohn's disease clinical remission was defined by a Harvey Bradshaw score < 5 and mucosal healing by a simple endoscopic score for Crohn's disease < 3. In ulcerative colitis, it was defined as a Mayo total score < 3 and Mayo endoscopic subscore < 2. Receiver operating characteristic test was performed to determine drug concentration thresholds associated with deep remission. Anti tumor necrosis factor-alpha concentrations were classified into quartiles. X² and Kruskal-Wallis test were used to compare discrete and continuous variables between quartile groups. Multivariate

Resumen

Objetivo: La remisión profunda, definida como remisión clínico-analítica y curación de la mucosa, es el objetivo terapéutico en la enfermedad inflamatoria intestinal. En este estudio se define el punto de corte óptimo de concentración valle de infliximab y adalimumab asociado a remisión profunda en fase de mantenimiento. El objetivo secundario es evaluar las covariables relacionadas con las concentraciones de antifactor de necrosis tumoral y la remisión profunda.

Método: Estudio retrospectivo que incluyó 120 y 122 pacientes diagnosticados de enfermedad inflamatoria intestinal tratados con infliximab y adalimumab. La proteína C reactiva < 5 mg/l y la calprotectina fecal < 100 µg/g se consideró para remisión analítica. En la enfermedad de Crohn, la remisión clínica se definió mediante puntuación Harvey Bradshaw < 5; la curación de la mucosa por puntuación endoscópica simple para enfermedad de Crohn < 3; en colitis ulcerosa, por índice total de Mayo < 3 e índice subendoscópico de Mayo < 2. Se realizó un análisis por curva de eficacia diagnóstica para determinar el *cutoff* asociado a remisión profunda. Las concentraciones de antifactor de necrosis tumoral se clasificaron en cuartiles. Se utilizó la prueba X² y Kruskal-Wallis para comparar variables discretas o continuas. Se realizó una regresión

KEYWORDS

Infliximab; Adalimumab; Inflammatory bowel diseases; Crohn disease; Colitis ulcerative; Therapeutic drug monitoring; Pharmacokinetics.

PALABRAS CLAVE

Infliximab; Adalimumab; Enfermedad inflamatoria intestinal; Enfermedad de Crohn; Colitis ulcerosa; Monitorización terapéutica farmacocinética; Farmacocinética.



Los artículos publicados en esta revista se distribuyen con la licencia
Articles published in this journal are licensed with a
Creative Commons Attribution-NonCommercial-ShareAlike 4.0 International License.
<http://creativecommons.org/licenses/by-nc-sa/4.0/>
La revista Farmacia no cobra tasas por el envío de trabajos,
ni tampoco por la publicación de sus artículos.

logistic regression was performed to identify patient characteristics and serological factors associated with deep remission.

Results: Anti-tumor necrosis factor- α concentrations were higher in patients with deep remission, in infliximab (4.4, interquartile range: 3.3-6.5 vs 2.3, interquartile range: 1.1-4.2 $\mu\text{g}/\text{mL}$, $P < 0.005$) and adalimumab (6.3, interquartile range: 4.2-8.2 vs 3.9, interquartile range: 2.4-5.5 $\mu\text{g}/\text{mL}$, $P < 0.005$). A Receiver operating characteristic test identified a concentration threshold of 3.1 $\mu\text{g}/\text{mL}$ in infliximab (area under the Receiver operating characteristic test curve, 0.72) and 6.3 $\mu\text{g}/\text{mL}$ in adalimumab (area under receiver operating characteristic test curve, 0.75) associated with deep remission. Factors associated with the highest quartiles of serum infliximab concentration were: elevated body mass index, absence of previous inflammatory bowel disease-surgery, C-reactive protein $< 5 \text{ mg}/\text{L}$, and fecal calprotectin $< 100 \mu\text{g}/\text{g}$. In adalimumab, higher quartiles were related to concomitant immunosuppressants, low body mass index, absence of previous inflammatory bowel disease-surgery, and C-reactive protein $< 5 \text{ mg}/\text{L}$ and fecal calprotectin $< 100 \mu\text{g}/\text{g}$. Multivariate regression identified fecal calprotectin $< 100 \mu\text{g}/\text{g}$, C-reactive protein $< 5 \text{ mg}/\text{L}$, infliximab $\geq 3.1 \mu\text{g}/\text{mL}$ and adalimumab concentrations $\geq 6.3 \mu\text{g}/\text{mL}$ as factors significantly associated with deep remission.

Conclusions: Trough infliximab and adalimumab concentrations, C-reactive protein $< 5 \text{ mg}/\text{L}$ and fecal calprotectin $< 100 \mu\text{g}/\text{g}$ are associated with deep remission during maintenance therapy. Cutoff point of 3.1 and 6.3 $\mu\text{g}/\text{mL}$ for infliximab and adalimumab respectively, were identified as deep remission predictors.

Introduction

Crohn's disease (CD) and ulcerative colitis (UC) are the two main types of chronic inflammatory bowel disease (IBD). Although their etiology remains unknown, studies have found a high concentration of tumor necrosis factor- α (TNF- α) in both CD and UC compared to controls¹. In this regard, anti-TNF is an effective therapy to induce and maintain clinical remission as well as mucosa healing (MH).

Adalimumab (ADA) and infliximab (IFX) are the first-line anti-TNF drugs in case of inadequate response to conventional treatments in patients with moderately to severely active IBD. Although pharmacological options have increased in recent years with new biologic drugs (ustekinumab, vedolizumab...) and JAK inhibitors such as tofacitinib², the available lines after failure of anti-TNF agents are limited.

However, about 10-30% of IBD patients treated with anti-TNF do not respond to induction therapy (primary non-response), while 23-46% of patients who are in remission lose response (LOR) during treatment (secondary LOR). The most common mechanism implicated in the development of LOR is the formation of antibodies against anti-TNF that interfere with TNF binding, accelerate drug clearance and correlate with lower serum drug concentrations and shorter duration of response³. The rate of LOR after 12 months ranges from 23% to 46% in CD patients treated with IFX or ADA⁴. Consequently, approximately 25% of CD patients experience LOR to IFX during the first year of maintenance therapy⁵. In addition, the pharmacokinetics of anti-TNFs are highly variable among patients and could be influenced by many factors, such as serum albumin, gender, body mass index (BMI), systemic inflammation and coadministration of immunosuppressive drugs (IMM)⁶.

Serum concentrations of these anti-TNFs have been correlated with improved clinical outcomes⁷. Since healthcare expenditure in IBD have been mainly attributed to drug treatment costs⁸, therapeutic drug monitoring (TDM) could be important in reducing healthcare costs without negatively impacting efficacy⁹. Deep remission (DR) defined as biomarker remission, clinical remission and mucosal healing has emerged as a new therapeutic target in IBD¹⁰. However, an optimal cutoff concentration of IFX and ADA predictive of DR has not been clearly defined.

The aim of this study was to define an optimal serum trough concentrations cut-off point for IFX and ADA during maintenance therapy associated with DR in IBD. The secondary objective, was to evaluate the influence of sociodemographic, clinical, pharmacological and biomarker variables on anti-TNF concentrations and DR.

Methods

Study design, definitions and patient population

This is a retrospective, observational, single-center study that included adult patients with CD or UC who received IFX or ADA at the Castellón

logística multivariante para identificar las características de pacientes y serológicas asociadas a remisión profunda.

Resultados: Las concentraciones de antifer factor de necrosis tumoral fueron superiores en remisión profunda en comparación con los que no la alcanzaron en infliximab (4,4; rango intercuartílico: 3,3-6,5 versus 2,3; rango intercuartílico: 1,1-4,2 $\mu\text{g}/\text{mL}$; $P < 0,005$) y adalimumab (6,3; rango intercuartílico: 4,2-8,2 versus 3,9; rango intercuartílico: 2,4-5,5 $\mu\text{g}/\text{mL}$; $P < 0,005$). Se identificó un *cutoff* de 3,1 $\mu\text{g}/\text{mL}$ en infliximab (área bajo la curva de eficacia diagnóstica 0,72), y 6,3 $\mu\text{g}/\text{mL}$ en adalimumab (área bajo la curva de eficacia diagnóstica 0,75). Los factores asociados a concentraciones más elevadas de infliximab fueron: elevado índice de masa corporal, ausencia de cirugía previa de enfermedad inflamatoria intestinal, proteína C reactiva $< 5 \text{ mg}/\text{L}$ y calprotectina fecal $< 100 \mu\text{g}/\text{g}$. En adalimumab, concentraciones más altas se relacionaron con coadministración de inmunosupresores, bajo índice de masa corporal, ausencia de cirugía previa, proteína C reactiva $< 5 \text{ mg}/\text{L}$ y calprotectina fecal $< 100 \mu\text{g}/\text{g}$. Se identificó calprotectina fecal $< 100 \mu\text{g}/\text{g}$, proteína C reactiva $< 5 \text{ mg}/\text{L}$, infliximab $\geq 3,1 \mu\text{g}/\text{mL}$ y adalimumab $\geq 6,3 \mu\text{g}/\text{mL}$ como factores asociados a remisión profunda.

Conclusiones: Las concentraciones valle de infliximab y adalimumab, proteína C reactiva $< 5 \text{ mg}/\text{L}$ y calprotectina fecal $< 100 \mu\text{g}/\text{g}$ se asocian a remisión profunda. Se identifican concentraciones *cutoff* de 3,1 y 6,3 $\mu\text{g}/\text{mL}$ en infliximab y adalimumab, respectivamente, como predictoras de remisión profunda.

General University Hospital from December 2013 to December 2020. All consecutive adults included were responders to induction with IFX or ADA and were treated by maintenance strategy. The maintenance dose of IFX ranged from 5 to 10 mg/kg and ranged every 6 to 8 weeks. The ADA dose was 40 mg and was administered with a dosing interval ranging from every two weeks to every week.

The cohort population underwent endoscopic examination and TDM. Endoscopic evaluations were performed no more than 5 days prior to measurement of the minimum IFX or ADA concentration. Assessment of clinical disease activity and serology determination were performed on the day of measurement of the trough IFX or ADA concentration. Patients in whom the dose was not stable for at least 3 months on IFX and 1 month on ADA prior to the measurement of the minimum concentration were excluded. Analytical and treatment data were reviewed from patients' electronic medical records until March 2021. The study was approved by the department's Drug Research Ethics Committee.

Deep remission definitions

DR was defined as analytical and clinical remission, as well as MH. C-reactive protein (CRP) $< 5 \text{ mg}/\text{L}$ and fecal calprotectin (FC) $< 100 \mu\text{g}/\text{g}$ were criteria to analytical remission. In CD, clinical remission was defined by Harvey Bradshaw (HB) score < 5 and MH by simple endoscopic score for CD (SES-CD) < 3 . The diagnostic study was supported by magnetic enteroresonance imaging in patients with ileal disease. In UC, a Mayo total score < 3 and MH was defined by Mayo endoscopic subscore < 2 .

Therapeutic Drug Monitoring

IFX and ADA serum samples were routinely and systematically collected in the Pharmacokinetics Area of the Pharmacy Department. Samples were drawn just before the next administration of IFX or ADA (minimum concentration) in serum separator tubes. After centrifugation (1500 $\times g$ for 10 minutes), the serum was aliquoted into two labeled polypropylene Eppendorf tubes and stored at $-20 \text{ }^\circ\text{C}$ until analysis. TDM was performed at steady state during maintenance treatment, and samples were drawn from week 30 of initiation of anti-TNF treatment.

Trough concentrations of anti-TNF and antibodies to IFX (ATI) and ADA (ATA) were measured using an automated, clinically validated Lisa-Tracker® enzyme-linked immunosorbent assay kit (Theradiag Laboratories®). This technique measures the concentrations of free TNF- α inhibitor and free anti-drug antibodies¹¹. The lower limit of detection for anti-TNF trough concentration was 0.3 $\mu\text{g}/\text{mL}$ and 10 ng/mL for anti-drug antibodies.

Baseline variables and serology

Baseline variables such as sex, age at diagnosis, diagnosis, perianal fistulizing, Montreal Classification for UC and EC, and previous biologic therapy were recorded. Duration of anti-TNF, prior biologic therapy, concomitant corticosteroids (CS) and IMM, smoking, weigh, BMI, CRP, FC, DR, clinical remission, MH, and biochemical variables (hemoglobin, white blood cell count, neutrophils, platelets, albumin) were determined on the day of TDM specimen extraction.

Statistical analysis

Demographic characteristics were provided with medians and interquartile range (IQR) for continuous variables and frequency and percentage for categorical variables. When considering serum IFX and ADA concentrations, a receiver operating characteristic (ROC) analysis was performed using the DR as a classification variable to calculate sensitivity, specificity, positive predictive value (PPV), negative predictive value (NPV), likelihood ratio (LR) and area under the ROC curve (AUROC) with associated P-value. ADA and IFX concentrations were compared between groups with the Mann-Whitney U test according to DR. DR rates were compared between into concentration increments of anti-TNF using the χ^2 test. Serum anti-TNF concentrations were also classified into quartiles. The χ^2 test and Kruskal-Wallis test were used to compare discrete or continuous variables between quartile groups. The χ^2 test and Mann-Whitney test were used for univariate assessment to determine categorical or quantitative variables associated with DR, respectively. Multivariate binary logistics was performed including the variables from the univariate analysis with a P value < 0.1, following the backward Wald method to identify the independent variables associated with DR. Results were expressed as odds ratio (OR) with 95% confidence intervals (95% CI), and P values.

A P value of P < 0.05 was selected to consider the results statistically significant. All statistical performance was analyzed using STATA (version 14.0).

Results

Study population

120 and 122 patients treated with IFX and ADA, respectively, were included. Most patients had analytical remission according to CRP < 5 mg/L

(IFX, n = 95, 79.2%) (ADA, n = 80, 65.6%) and FC < 100 $\mu\text{g/g}$ (IFX, n = 80, 66.7%) (ADA, n = 72, 59.0%). DR was achieved in 52 of 120 (43.3%) and 52 of 122 (42.6%) patients with IFX and ADA, respectively. Disease and patient characteristics are listed in table 1.

Anti-TNF and DR concentrations

Median (IQR) anti-TNF trough concentrations were significantly higher in patients with DR compared to those without, in IFX (4.4, IQR: 3.3-6.5 vs 2.3, IQR: 1.1-4.2 $\mu\text{g/mL}$, P < .005) and ADA (6.3, IQR: 4.2-8.2 vs 3.9, IQR: 2.4-5.5 $\mu\text{g/mL}$, P < .005). A ROC curve analysis identified statistically significant concentration thresholds of 3.1 in IFX and 6.3 $\mu\text{g/mL}$ in ADA associated with DR (Figure 1). Higher serum anti-TNF concentration was associated with higher rates of DR in IFX and ADA (Figure 2). Factors associated with quartiles of serum anti-TNF concentrations are depicted in table 2. Factors associated with higher IFX concentrations were high BMI, absence of previous IBD-related surgery, CRP concentrations < 5 mg/L and FC < 100 $\mu\text{g/g}$. In ADA, concomitant IMM, low BMI, absence of previous IBD-related surgery, and CRP concentrations < 5 mg/L and FC < 100 $\mu\text{g/g}$ were associated with concomitant IMM.

Anti-TNF antibodies and DR

Of the total population receiving anti-TNF therapy, only 7 (6%) on IFX and 5 patients (4%) on ADA developed ATI and ATA, respectively. Titers ranged from 16 to 1,440 ng/mL in IFX and from 12 to 672 in ADA.

Factors associated with DR

Univariate analysis identified FC < 100 $\mu\text{g/g}$ (P = 0.001), CRP < 5 mg/L (P = 0.028), IFX concentrations ≥ 3.1 $\mu\text{g/mL}$ (P < 0.001) as variables associated with DR in IFX-treated patients. In ADA, the variables associated with DR by univariate analysis were FC < 100 $\mu\text{g/g}$ (P = 0.001), CRP < 5 mg/L (P = 0.002), concentrations ≥ 6.3 $\mu\text{g/mL}$ (P < 0.001) and positive ATA (P = 0.049) (Table 3).

Multivariate binary logistic regression analysis retained FC < 100 $\mu\text{g/g}$ (P = 0.039), CRP < 5 mg/L (P = 0.035), IFX concentrations ≥ 3.1 $\mu\text{g/mL}$ (P = 0.008) in IFX, and FC < 100 $\mu\text{g/g}$ (P = 0.030), CRP < 5 mg/L (P = 0.015) and ADA concentrations ≥ 6.3 $\mu\text{g/mL}$ (P = 0.010) in ADA associated with DR (Table 4).

Figure 1. ROC curves for trough concentrations of infliximab and adalimumab in inflammatory bowel disease patients (deep remission vs no deep remission).

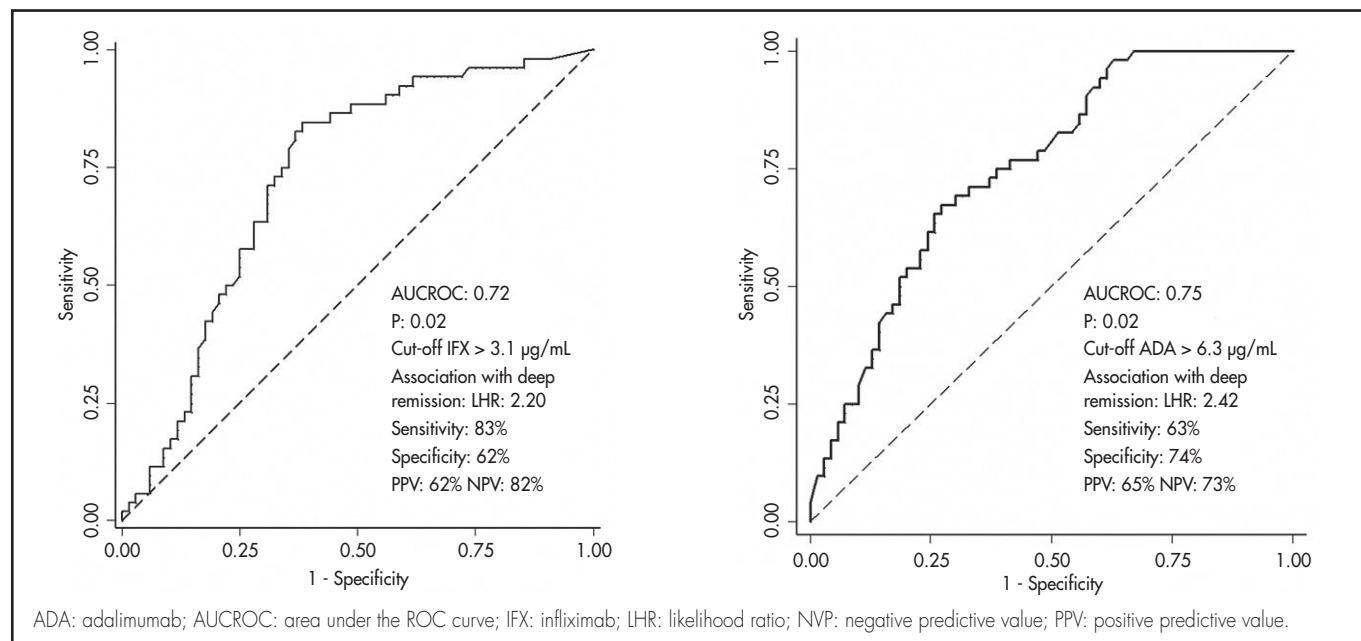


Table 1. Patient characteristics

Anti-TNF	Infliximab	Adalimumab
N	120	122
Male (%)	83 (69.2)	67 (54.9)
Age at diagnosis, median (IQR) (y)	35 (24-46)	33 (22-48)
Age at anti-TNF trough measurement, median (IQR) (y)	43 (34-55)	40 (36-52)
Anti-TNF treatment duration at TDM, median (IQR) (mo)	10.9 (7.1-16.7)	26.3 (11.1-46.7)
Crohn disease (%)	89 (74.2)	102 (83.6)
Previous IBD related surgery, n (%)	37 (30.8)	51 (41.8)
Perianal fistulising CD (%)	36/89 (40.4)	50./102 (49.0)
CD location [†] (%): L1;L2;L3	24/89 (27); 17/89 (19); 48/89 (54)	31/102 (30); 11/102 (11); 60/102 (59)
CD behavior [†] (%): B1;B2;B3	39/89 (44); 22/89 (25); 28/89 (31)	44/102 (43); 21/102 (21); 37/102 (36)
UC extent [‡] (%): E1;E2;E3	1/31 (3); 16/31 (52); 14/31 (45)	0/20 (0); 12/20 (60); 8/20 (40)
Prior biological therapy (%)	44 (36.7)	28 (22.9)
Dose intensification	48 (40.0)	60 (49.2)
Concomitant CS (%)	18 (15.0)	17 (13.9)
Concomitant IMMs (%)	58 (48.3)	55 (45.1)
Smoking (%)	20 (16.7)	30 (24.6)
Weigh, median (IQR) (kg)	76.2 (66.8-88.3)	75.1 (64.5-85.8)
BMI, median (IQR) (kg/m ²)	23.9 (20.0-27.8)	23.6 (21.1-26.2)
CRP < 5 mg/L (%)	95 (79.2)	80 (65.6)
FC < 100 µg/g (%)	80 (66.7)	72 (59.0)
DR	52 (43.3)	52 (42.6)
Clinical remission	62 (51.7)	55 (45.1)
MH	56 (46.7)	60 (49.2)
Variables bioquímicas		
Hemoglobin, median (IQR) (g/dl) (n ¼ 100)	13,8 (11,6-14,7)	13,1 (11,8-14,5)
WBC, median (IQR) (10 ⁹ /L) (n ¼ 97)	8,2 (5,7-10,5)	8,3 (5,6-10,7)
Neutrophils, median (IQR) (10 ⁹ /L) (n ¼ 92)	5,2 (3,5-7,4)	5,6 (3,7-7,5)
Platelets, median (IQR) (10 ⁹ /L) (n ¼ 100)	320 (270-401)	340 (288-430)
Albumin, median (IQR) (g/L) (n ¼ 98)	4,2 (4,0-4,5)	4,1 (4,0-4,3)

BMI: body mass index; CRP: C-reactive protein; CS: corticosteroids; DR: deep remission; FC: fecal calprotectin; IMMs: concomitant immunosuppressive; IQR: interquartile range; MH: mucosa healing; mo: months; WBC: white blood count; y: years.

[†]Montreal classification for Crohn's disease. Location: L1 ileal, L2 colonic, L3 ileocolonic, and L4 isolated upper disease. Behavior: B1 nonstricturing nonpenetrating, B2 stricturing, and B3 penetrating.

[‡]Montreal classification for extent of ulcerative colitis (UC): E1 ulcerative proctitis, E2 leftsided UC, and E3 extensive UC.

Figure 2. Rates of deep remission by trough concentrations increments of 3 µg/mL in infliximab and adalimumab (P values indicate comparison across concentrations, X² test (linear-by-linear association)).

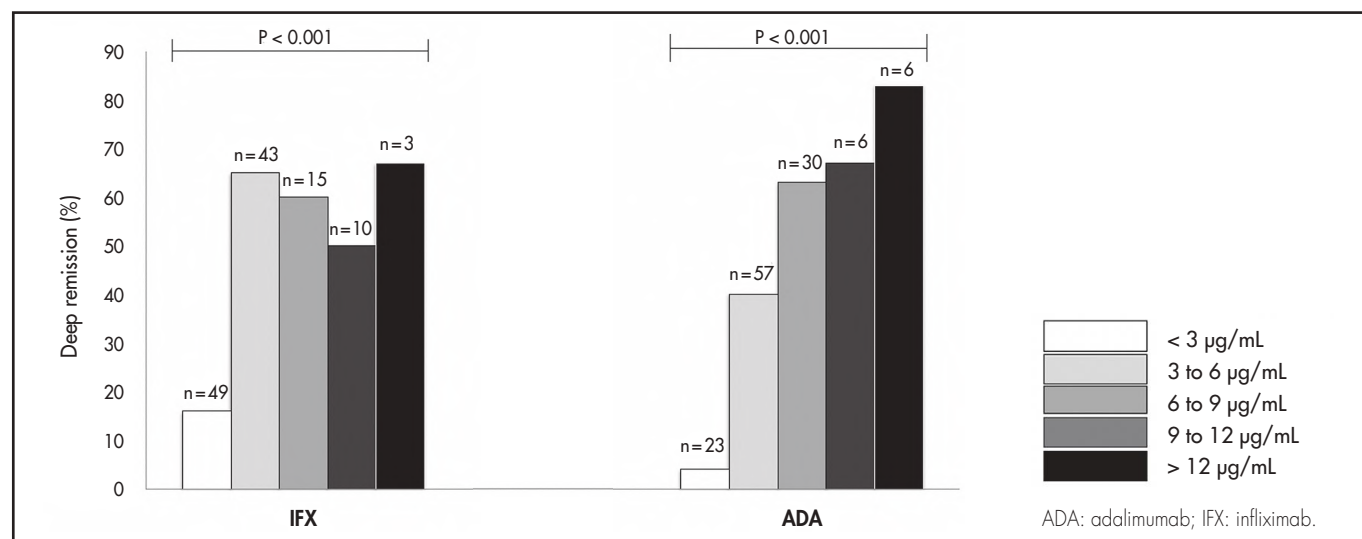


Table 2. Summary of factors associated with serum IFX and ADA concentrations quartiles.

Infliximab concentration		Q1 (n = 30)	Q2 (n = 30)	Q3 (n = 30)	Q4 (n = 30)	P ^a
Male (%)		21 (70.0)	18 (60.0)	20 (66.7)	24 (80)	0.402
Age at TDM, median (IQR) (y)		42.5 (31.9-50.2)	41.3 (30.7-54.1)	42.5 (35.2-52.5)	53.9 (34.6-56.6)	0.391
IFX duration, median (IQR) (mo)		12.0 (7.2-16.0)	9.2 (7.1-19.5)	7.1 (7.0-10.6)	12.2 (7.1-28.6)	0.092
Crohn Disease ^b (%)		24 (80.0)	22 (73.3)	21 (70.0)	22 (73.3)	0.843
Perianal fistulising CD (%)		10/24 (41.7)	8/22 (36.4)	11/21 (52.4)	7/22 (31.8)	0.554
Previous IBD related surgery (%)		14 (46.7)	12 (40.0)	6 (20.0)	5 (16.7)	0.027
CD location (%):	L1	5/24 (20.8)	6/22 (27.3)	7/21 (33.3)	6/22 (27.3)	0.827
	L2	3/24 (12.5)	5/22 (22.7)	5/21 (23.8)	4/22 (18.2)	0.758
	L3	14/24 (58.3)	10/22 (45.5)	11/21 (52.4)	13/22 (59.1)	0.782
CD behavior (%):	B1	7/24 (29.2)	8/22 (36.4)	12/21 (57.1)	12/22 (54.6)	0.162
	B2	4/24 (16.7)	6/22 (27.3)	7/21 (33.3)	5/22 (22.7)	0.615
	B3	9/24 (37.5)	6/22 (27.3)	5/21 (23.8)	8/22 (36.4)	0.705
UC extent (%):	E1	0/6 (0.0)	0/8 (0.0)	0/9 (0.0)	1/8 (12.5)	0.396
	E2	2/6 (33.3)	3/8 (37.5)	5/9 (55.6)	6/8 (75.0)	0.355
	E3	1/6 (16.7)	3/8 (37.5)	5/9 (55.6)	5/8 (62.5)	0.318
IFX dose intensification		10 (33.3)	16 (53.3)	14 (46.7)	8 (26.7)	0.135
Concomitant IMM (%)		14 (46.7)	12 (40.0)	15 (50.0)	17 (56.7)	0.629
Concomitant CS (%)		7 (23.3)	6 (20.0)	3 (10.0)	2 (6.7)	0.256
Weigh, median (IQR) (kg)		73.2 (61.8-80.3)	73.8 (63.7-82.3)	76.4 (69.5-89.3)	79.2 (70.3-90.6)	0.080
Baseline BMI, median (IQR), kg/m²		21.3 (18.1-25.5)	22.7 (18.8-25.7)	24.5 (23.8-27.9)	26.8 (25.4-30.2)	0.021
Albumin, median (IQR), g/L		4.0 (3.9-4.2)	4.2 (4.1-4.5)	4.3 (4.2-4.5)	4.3 (4.3-4.6)	0.062
CRP < 5 mg/L (%)		18 (60.0)	22 (73.3)	27 (90.0)	28 (93.3)	0.004
FC < 100 µg/g		11 (36.7)	18 (60.0)	24 (80.0)	27 (90.0)	<0.001
ATI (%)		7 (23.3)	-	-	-	-
Adalimumab concentration		Q1 (n = 30)	Q2 (n = 31)	Q3 (n = 31)	Q4 (n = 30)	P ^a
Male (%)		17 (56.7)	16 (51.6)	16 (51.6)	18 (60.5)	0.891
Age at ADA trough level measurement, median (IQR) (y)		39.5 (36.9-48.2)	46.1 (35.13-60.9)	37.5 (33.2-43.1)	39.7 (34.7-48.7)	0.410
ADA duration, median (IQR) (mo)		34.8 (17.2-59.8)	23.4 (13.0-40.0)	15.7 (7.3-30.1)	22.0 (9.1-47.7)	0.864
Crohn disease ^b (%)		24 (80.0)	28 (90.3)	24 (77.4)	26 (86.7)	0.498
Perianal fistulising CD (%)		16/24 (66.7)	14/28 (50.0)	12/24 (50.0)	8/26 (31.7)	0.091
Previous IBD related surgery (%)			20 (45.2)	10 (41.9)	8 (53.3)	0.014
CD location [†] (%):	L1	6/24 (25.0)	11/28 (39.3)	5/24 (20.8)	9/26 (34.6)	0.452
	L2	2/24 (8.3)	5/28 (17.9)	2/24 (8.3)	2/26 (7.7)	0.570
	L3	18/24 (75.0)	17/28 (60.7)	15/24 (62.5)	10/26 (38.5)	0.065
CD behavior [†] (%):	B1	9/24 (37.5)	13/28 (46.4)	14/24 (58.3)	8/26 (30.8)	0.229
	B2	6/24 (25.0)	3/28 (10.7)	6/24 (25.0)	6/26 (23.2)	0.505
	B3	8/24 (33.3)	11/28 (39.3)	7/24 (29.2)	11/26 (42.3)	0.769
UC extent [†] (%):	E1	0/6 (0.0)	0/3 (0.0)	0/7 (0.0)	0/4 (0.0)	-
	E2	4/6 (66.7)	2/3 (66.7)	4/7 (57.1)	2/4 (50.0)	0.949
	E3	2/6 (33.3)	0/3 (0.0)	3/7 (42.9)	¾ (75.0)	0.243
ADA dose intensification		10 (33.3)	18 (58.1)	16 (51.6)	16 (51.6)	0.233
Concomitant IMM (%)		5 (16.7)	10 (32.3)	20 (64.5)	20 (66.7)	<0.001
Concomitant CS (%)		8 (26.7)	5 (16.1)	3 (9.7)	1 (3.3)	0.059
Weigh, median (IQR) (kg)		80.1 (69.2-89.2)	77.7 (65.3-84.1)	74.9 (63.5-82.1)	72.3 (61.8-79.9)	0.070
Baseline BMI, median (IQR), kg/m²		28.6 (25.3-30.6)	27.8 (22.9-31.4)	23.2 (19.8-27)	21.2 (19.4-26.8)	0.004
Albumin, median (IQR), g/L		4.1 (3.9-4.5)	4.2 (4.1-4.4)	4.2 (4.0-4.5)	4.3 (4.0-4.6)	0.073
CRP < 5 mg/L (%)		14 (46.7)	18 (58.0)	23 (74.2)	25 (83.3)	0.013
FC < 100 µg/g		9 (30.0)	18 (58.1)	20 (64.5)	25 (83.3)	<0.001
AAA, (%)		5 (16.7)	-	-	-	-

AAA: antibodies to adalimumab; ATI: antibodies to infliximab; BMI: body mass index; CD: Crohn's disease; CRP: C-reactive protein; CS: corticosteroids; FC: fecal; IQR: interquartile range; mo: month; IMM: thiopurines; UC: ulcerative colitis y: years.

^aThe Kruskal-Wallis and the chi-square test were used to compare continuous or discrete variables respectively.

^bPercentage of Crohn's disease versus ulcerative colitis.

[†]Montreal classification for Crohn's disease. Location: L1 ileal, L2 colonic, L3 ileocolonic, and L4 isolated upper disease. Behavior: B1 nonstricturing nonpenetrating, B2 stricturing, and B3 penetrating.

[†]Montreal classification for extent of ulcerative colitis (UC): E1 ulcerative proctitis, E2 left-sided UC, and E3 extensive UC.

Discussion

A treat-to-target approach leading to better clinical outcomes as a new therapeutic strategy. This study demonstrated that higher IFX and ADA concentrations during maintenance therapy are associated with DR in IBD.

TDM of anti-TNF agents has been associated with biomarker normalization and clinical remission. In a cohort based on a study of 1,487 samples from 483 patients, it was shown that an IFX concentration of > 2.79 µg/mL was associated with CRP < 5 mg/L¹². A meta-analysis¹³, which included 22 studies, a higher minimum serum IFX concentration was associated with clinical remission, and an IFX cutoff concentration above 2 µg/mL was associated with an increased likelihood of clinical remission. Similarly, a major ADA concentrations were associated with improved clinical outcomes. The meta-analysis¹⁴ that included seven observational studies, a systematic review, a meta-analysis, and a clinical trial post hoc analysis, suggested ranges of ADA concentrations vary by target, postulating concentrations of 4.8 µg/mL as the cutoff point for clinical remission.

In our study, univariate and multivariate logistic regression analysis shows a strong correlation between IFX and ADA concentrations and DR. Importantly, an optimal cutoff value of 3.1 µg/mL for IFX and 6.3 µg/mL for ADA trough concentrations were identified. The cutoff point related to DR was lower than that observed in others studies¹⁵⁻¹⁸ which propose a therapeutic window of 5-10 µg/mL for IFX and 8-12 µg/mL for ADA to achieve MH. However, the trough concentrations in these studies were not obtained at steady state, which could explain the higher therapeutic range proposed. In this respect, cutoff values in the literature are very heterogeneous and other studies proposed values of 3.4 µg/mL¹⁹ for IFX and 4.9 µg/mL for ADA²⁰. In this study, a huge percentage of patients with previous IBD surgery were included, and no differences in DR were observed, despite having lower anti-TNF concentrations. Anti-TNFs have shown high efficacy in preventing postoperative endoscopic recurrence of CD²¹, Sorrentino *et al.*²² suggested that lower doses of IFX, despite obtaining lower concentrations, maintained clinical and endoscopic remission in this patient profile. Although our study identified a specific cutoff point

Table 3. Univariate analysis of baseline variables associated with deep remission

Baseline variables	IFX			ADA			
	Deep remission* (N = 52)	No DR (N = 68)	P	DR (N = 52)	No DR (N = 70)	P	
Male, (%)	35 (67.3)	48 (70.6)	0.700	30 (57.7)	37 (52.9)	0.596	
Age at anti-TNF trough level measurement, median (IQR) (y)	44 (32-56)	42 (30-55)	0.569	40 (32-56)	41 (31-60)	0.580	
Disease duration: median (IQR) (y)	7.8 (2.2-12.1)	8.5 (2.8-12.5)	0.721	6.9 (4.8-10.1)	7.2 (4.7-12.2)	0.489	
Crohn disease (%) ^a	36 (69.2)	53 (77.9)	0.280	46 (88.5)	56 (80.0)	0.212	
Perianal fistulising CD (%)	11/36 (30.6)	25/53 (47.2)	0.117	20/46 (43.5)	30/56 (53.6)	0.310	
Previous IBD related surgery (%)		19 (27.9)	0.433	20 (38.5)	31 (44.3)	0.519	
CD location (%):	L1	10/36 (27.8)	14/53 (26.4)	0.537	14/46 (30.4)	17/56 (30.4)	0.310
	L2	8/36 (22.2)	9/53 (17.0)		4/46 (8.7)	7/56 (12.5)	
	L3	21/36 (58.3)	27/53 (50.9)		24/46 (52.2)	36/56 (64.3)	
CD behavior (%)	B1	15/36 (41.7)	24/53 (45.3)	0.652	19/46 (41.3)	25/56 (44.6)	0.587
	B2	9/36 (25.0)	13/53 (24.5)		8/46 (17.4)	13/56 (23.2)	
	B3	12/36 (46.2)	16/53 (30.2)		18/46 (39.1)	19/56 (33.9)	
UC extent (%)	E1	1/16 (6.25)	0/15 (0.0)	0.376	0/6 (0.0)	0/14 (0.0)	0.439
	E2	10/16 (62.5)	6/15 (40.0)		5/6 (83.3)	7/14 (50.0)	
	E3	6/16 (37.5)	8/15 (53.3)		3/6 (50.0)	5/14 (35.7)	
IFX or ADA dose intensification	18 (34.6)	30 (44.1)	0.292	22 (42.3)	38 (54.3)	0.191	
Concomitant CS (%)	7 (13.5)	11 (16.2)	0.680	6 (11.5)	11 (15.7)	0.510	
Concomitant IMM (%)	27 (51.9)	31 (45.6)	0.491	27 (51.9)	28 (40.0)	0.191	
Prior biological therapy (%)	20 (38.5)	24 (35.3)	0.721	9 (17.3)	19 (27.1)	0.201	
Smoking at infliximab initiation (%)	5 (9.6)	15 (22.1)	0.070	10 (19.2)	20 (28.6)	0.236	
Weigh, median (IQR) (kg)	77.2 (68.4-90.1)	74.8 (66.3-86.8)	0.180	76.1 (65.8-88.1)	73.9 (62.3-84.2)	0.191	
BMI, median (IQR), kg/m ²	25.4 (23.1-29.2)	23.5 (20.4-26.2)	0.130	24.9 (22.1-27.2)	23.2 (21.8-25.9)	0.192	
Baseline albumin, median (IQR), g/L	4.3 (3.9-4.5)	4.1 (3.7-4.3)	0.125	4.3 (4.0-4.6)	4.0 (3.8-4.3)	0.090	
Baseline FC < 100 µg/g (%)	43 (82.7)	37 (54.4)	0.001	40 (76.9)	32 (45.7)	0.001	
Baseline CRP < 5 mg/L (%)	46 (88.5)	49 (72.1)	0.028	42 (80.8)	38 (54.3)	0.002	
Immunogenicity (ATI or ATA)	1 (1.9)	6 (8.8)	0.112	0 (0.0)	5 (7.1)	0.049	
IFX concentration ≥ 3.1 µg/mL	43 (82.7)	27 (39.7)	< 0.001	-	-	-	
ADA concentration ≥ 6.3 µg/mL	-	-	-	27 (51.9)	13 (18.6)	<0.001	

AAA: antibodies to adalimumab; ATI: antibodies to infliximab; BMI: body mass index; CRP: C-reactive protein; CS: corticosteroids; DR: deep remission; FC: fecal; IQR: interquartile range; mo: month; IMM: thiopurines; y: years.

^aPercentage of Crohn's disease versus ulcerative colitis.

*Deep remission was defined as combination of clinical remission, biomarker normalization, and endoscopic remission.

Table 4. Variables associated with deep remission

Prognostic markers	Infliximab					
	Univariate analysis			Multivariate analysis		
	OR	95% CI	P value	OR	95% CI	P value
FC < 100 µg/g	5.8	(1.8-20.6)	0.001	4.4	1.3-15.7	0.039
CRP < 5 mg/L	4.7	(1.2-19.8)	0.028	4.1	1.1-14.2	0.035
IFX ≥ 3.1 µg/mL	6.3	(2.2-22.5)	< 0.001	5.3	1.5-17.7	0.008
Prognostic markers	Adalimumab					
	Univariate analysis			Multivariate analysis		
	OR	95% CI	P value	OR	95% CI	P value
FC < 100 µg/g	6.9	(2.3-25.3)	0.001	5.3	1.6-18.5	0.030
CRP < 5 mg/L	7.1	(1.3-26.1)	0.002	4.9	1.3-15.8	0.015
ADA ≥ 6.3 µg/mL	6.6	(3.4-26.8)	< 0.001	5.8	2.6-16.8	0.010
ATA	0.8	(0.6-1.0)	0.049			

ATA: antibodies anti adalimumab; CI: confidence intervals; CRP: C-reactive protein; FC: fecal calprotectin; OR: odds ratio.

A multivariate binary logistic was performed including variables from univariate analysis with a P value < 0.1, following Backward Wald method to identify the independent variables associated with DR.

associated with DR, the range of concentrations associated with deep remission was wide, ranging from 0 to 14.4 µg/mL and from 2.36 to 15.6 µg/mL in IFX and ADA, respectively, so the target concentration should be individualized. Infliximab level up to 3.1 µg/mL resulted in an increased DR rate, and higher drug levels were not associated with a much greater increase in DR. In the case of ADA, major levels (>12 µg/mL) lead to improve DR proportion, so some patients may require even higher concentrations to achieve better results. In this regard, Plevris *et al.*²³, explain that higher concentrations of ADA are necessary for fistula closure. However, in our study, only 6 patients achieved these concentrations, so no conclusions can be drawn.

Similarly, to the available evidence, CRP < 5 mg/L²⁴ and FC < 100 µg/g²⁵ were identified as independent factors of DR. In addition, high BMI, absence of previous IBD-related surgery, CRP < 5 mg/L, FC < 100 µg/g in IFX, and coadministration of IMM, low BMI, absence of previous IBD-related surgery, CRP < 5 mg/L, and FC < 100 µg/g in ADA positively influence to achieve higher trough concentrations. The influence of BMI was in agreement with other studies, in a pharmacokinetic study²⁶ of 24 patients receiving IFX, higher BMI correlated with higher post-infusion concentrations; although this did not correlate with a higher response rate, suggesting that circulating concentrations of the drug did not correlate with tissue concentrations. In the case of ADA, in a prospective pharmacokinetic study of Sanchez *et al.*, BMI showed influence by increasing the apparent clearance of ADA, and was a significant variable in the pharmacokinetics of ADA²⁷.

In contrast to other studies²⁸, concomitant immunomodulators did not correlate with IFX concentrations in our study. However, in a multicenter retrospective study²⁹ withdrawal of immunomodulators after at least 6 months of concomitant treatment with IFX did not reduce minimal IFX concentrations in patients with CD. In this regard, the patients included in our study had a median IFX treatment duration of 10.9 months, and could influence the lack of impact of immunomodulator coadministration on IFX concentrations. Coadministration of IMM was associated with higher ADA concentrations in our series of patients, similar to a Diamond trial³⁰, which evaluated the efficacy of ADA with and without azathioprine in CD patients, although not statistically significant (p 0.084), coadministration of IMM tended to a higher minimum ADA concentration.

Immunogenicity was numerically higher in IFX than in ADA, as only 7 (6%) in IFX and 5 patients (4%) in ADA developed antibodies to the drug. However, the percentage of immunogenicity observed in the literature is very heterogeneous and can fluctuate depending on the immunoassay method used, varying widely between 0% and 79% in IFX and 0% and 87% in ADA, according to a recent review³¹. Positive ATI and ATA have been associated with a loss of clinical response^{32,33}. In our study, ATA was negatively related to DR in univariate analysis, although it was not significant

in multivariate analysis. Furthermore, only 1 of the 7 IBD patients with ATI, and no patients with ATA were in DR.

The use of a drug-sensitive assay that only detects concentrations of free TNF-α inhibitors and free anti-drug antibodies, with an inability to measure anti-drug antibodies in the presence of TNF-α inhibitors, could influence the low prevalence of patients with positive immunogenicity. Drug-tolerant assays from other manufacturers¹ use an acidic buffer that dissociates immunocomplexes between anti-drug antibodies and ADA or IFX, allowing measurement of anti-drug antibodies that are part of these immunocomplexes. TDM using these kits could improve the sensitivity of immunogenicity detection, improving the analysis of the influence of drug antibodies on DR. However, in a post hoc analysis of the TAXIT³⁴ trial that analyzed the clinical relevance of ATIs measured by a drug tolerance assay, it concluded that only high concentration ATIs, which are usually also detected in a drug sensitivity assay, persist over time and are clinically relevant and drug switching may be more cost-effective.

The main strength of our study was the systematic evaluation of DR considered as the new therapeutic target, using biomarkers and clinical and endoscopic scales. Unlike other studies, which evaluated the impact of IFX or ADA TDM using only biomarkers, or clinical and endoscopic assessment without standardization. Importantly, we were able to identify an optimal cutoff value for minimal IFX and ADA concentrations.

Our study has several weaknesses that should be mentioned. It is a single-center, real-world retrospective study, so confounders cannot be definitively excluded. No centralized reading of endoscopies was performed and interobserver variability cannot be excluded. Sampling was performed at different times in the course of the disease and a high percentage of patients with an intensification regimen were included. This may lead to an underestimation of the cut-off points, since concentrations that, due to a poor response, implied an intensification of treatment were not evaluated. In addition, clinical outcomes, such as hospitalization or colectomy, are not analyzed. The mean albumin level, a biomarker of anti-TNF clearance and enteropathy, was normal (4 g/L) in our cohort, and was not shown to be a factor associated with plasma concentrations or deep remission.

In conclusion, our findings highlight that IFX and ADA trough concentrations, CRP < 5 mg/L and FC < 100 µg/g are associated significantly with DR during maintenance therapy. Noteworthy, an optimal cut-off of 3.1 for IFX and 6.3 µg/mL for ADA were identified for predicting this outcome.

Funding

No funding.

Conflict of interest

No conflict of interest.

Contribution to the scientific literature

Deep remission, defined as clinical remission accompanied by healing of the intestinal mucosa, has emerged as a new therapeutic endpoint in the management of inflammatory bowel disease. Several studies have evaluated the impact of therapeutic monitoring of infliximab and adalimumab on the treatment of inflammatory bowel disease. However, most authors measure the response to these anti-TNF drugs using surrogate variables such as analytical biomarkers, non-standardized physician evaluations, or clinical remission scales. In contrast, this

paper evaluated the association of serum concentrations of infliximab and adalimumab with the achievement of deep remission as a clinical endpoint during maintenance therapy.

The study contributes evidence on the clinical significance of the concentration of these anti-TNF drugs for the achievement of deep remission. It demonstrates the added value inherent in monitoring anti-TNF concentrations in hospital pharmacy departments. At the same time, it supports the active involvement of hospital pharmacists in the decisions about these drugs when used in the context of inflammatory bowel disease.

Bibliography

- Noguchi M, Hiwatahi N, Liu Z, Toyota T. Secretion imbalance between tumour necrosis factor and its inhibitor in inflammatory bowel disease. *Gut*. 1998;43(2):203-9. DOI: 10.1136/gut.43.2.203
- Weisshof R, El Jurdi K, Zmeter N, Rubin DT. Emerging Therapies for Inflammatory Bowel Disease. *Adv Ther*. 2018;35(11):1746-62. DOI: 10.1007/s12325-018-0795-9
- Roda G, Jharap B, Neeraj N, Colombel JF. Loss of Response to Anti-TNFs: Definition, Epidemiology, and Management. *Clin Transl Gastroenterol*. 2016;7:e135. DOI: 10.1038/ctg.2015.63
- Ben-Horin S, Chowers Y. Review article: loss of response to anti-TNF treatments in Crohn's disease. *Aliment Pharmacol Ther*. 2011;33(9):987-95. DOI: 10.1111/j.1365-2036.2011.04612.x
- Rutgeerts P, Sandborn WJ, Feagan BG, Reinisch W, Olson A, Johanns J, et al. Infliximab for induction and maintenance therapy for ulcerative colitis. *N Engl J Med*. 2005;353(23):2462-76. DOI: 10.1056/NEJMoa050516
- Nguyen DL, Flores S, Sassi K, Bechtold ML, Nguyen ET, Parekh NK. Optimizing the use of anti-tumor necrosis factor in the management of patients with Crohn's disease. *Ther Adv Chronic Dis*. 2015;6(3):147-54. DOI: 10.1177/2040622315579621
- Arias MT, Vande Castele N, Vermeire S, de Buck van Overstraeten A, Billiet T, Baert F, et al. A panel to predict long-term outcome of infliximab therapy for patients with ulcerative colitis. *Clin Gastroenterol Hepatol*. 2015;13(3):531-8. DOI: 10.1016/j.cgh.2014.07.055
- Van der Valk ME, Mangen MJJ, Leenders M, Dijkstra G, van Bodegraven AA, Fidder HH, et al. Healthcare costs of inflammatory bowel disease have shifted from hospitalisation and surgery towards anti-TNF α therapy: results from the COIN study. *Gut*. 2014;63(1):72-9. DOI: 10.1136/gutjnl-2012-303376
- Guidi L, Pugliese D, Panici Tonucci T, Berrino A, Toluoso B, Basile M, et al. Therapeutic drug monitoring is more cost-effective than a clinically-based approach in the management of loss of response to infliximab in inflammatory bowel disease: an observational multi-centre study. *J Crohns Colitis*. 2018;12(9):1079-88. DOI: 10.1093/ecco-jcc/jiy076
- Zallot C, Peyrin-Biroulet L. Deep remission in inflammatory bowel disease: looking beyond symptoms. *Curr Gastroenterol Rep*. 2013;15(3):315. DOI: 10.1007/s11894-013-0315-7
- Freeman K, Connock M, Auguste P, Taylor-Phillips S, Mistry H, Shyangdan D, et al. Clinical effectiveness and cost-effectiveness of use of therapeutic monitoring of tumour necrosis factor alpha (TNF- α) inhibitors [LISA-TRACKER[®] enzyme-linked immunosorbent assay (ELISA) kits, TNF- α -Blocker ELISA kits and Promonitor[®] ELISA kits] versus standard care in patients with Crohn's disease: systematic reviews and economic modelling. *Health Technol Assess*. 2016;20(83):1-288. DOI: 10.3310/hta20830
- Vande Castele N, Khanna R, Levesque BG, Stitt L, Zou GY, Singh S, et al. The relationship between infliximab concentrations, antibodies to infliximab and disease activity in Crohn's disease. *Gut*. 2015;64(10):1539-45. DOI: 10.1136/gutjnl-2014-307883
- Moore C, Corbett G, Moss AC. Systematic Review and Meta-Analysis: Serum Infliximab Levels During Maintenance Therapy and Outcomes in Inflammatory Bowel Disease. *J Crohns Colitis*. 2016;10(5):619-25. DOI: 10.1093/ecco-jcc/jiw007
- Hinojosa J, Muñoz F, Martínez-Romero GJ. Relationship between Serum Adalimumab Concentrations and Clinical Outcome in the Treatment of Inflammatory Bowel Disease. *Dig Dis*. 2019;37(6):444-50. DOI: 10.1159/000499870
- Juncadella A, Papamichael K, Vaughn BP, Cheifetz AS. Maintenance Adalimumab Concentrations Are Associated with Biochemical, Endoscopic, and Histologic Remission in Inflammatory Bowel Disease. *Dig Dis*. 2018;63(11):3067-73. DOI: 10.1007/s10620-018-5202
- Ungar B, Levy I, Yavne Y, Yavzori M, Picard O, Fudim E, et al. Optimizing Anti-TNF- α Therapy: Serum Levels of Infliximab and Adalimumab Are Associated With Mucosal Healing in Patients With Inflammatory Bowel Diseases. *Clin Gastroenterol Hepatol*. 2016;14(4):550-7e2. DOI: 10.1016/j.cgh.2015.10.025
- Ritter E, Hirsch A, Isakov NF, Ron Y, Cohen NA, Maharshak N. Higher Maintenance Adalimumab Trough Levels are Associated With Achievement of Advanced Remission Targets in Patients With Inflammatory Bowel Disease. *J Clin Gastroenterol*. 2020. DOI: 10.1097/MCG.0000000000001435
- Kang B, Choi SY, Choi YO, Lee SY, Baek SY, Sohn I, et al. Infliximab Trough Levels Are Associated with Mucosal Healing During Maintenance Treatment with Infliximab in Paediatric Crohn's Disease. *J Crohns Colitis*. 2019;13(2):189-97. DOI: 10.1093/ecco-jcc/jiy155
- Chaparro M, Barreiro-de Acosta M, Echarri A, Almendros R, Barrio J, Lloa J, et al. Correlation Between Anti-TNF Serum Levels and Endoscopic Inflammation in Inflammatory Bowel Disease Patients. *Dig Dis Sci*. 2019;64(3):846-54. DOI: 10.1007/s10620-018-5362-3
- Roblin X, Marotte H, Rinaudo M, Del Tedesco E, Moreau A, Phelip JM, et al. Association between pharmacokinetics of adalimumab and mucosal healing in patients with inflammatory bowel diseases. *Clin Gastroenterol Hepatol*. 2014;12(11):80-84.e2. DOI: 10.1016/j.cgh.2013.07.010
- Cañete F, Mañosa M, Casanova MJ, González-Sueyro RC, Barrio J, Bermejo F, et al. Adalimumab or Infliximab for the Prevention of Early Postoperative Recurrence of Crohn Disease: Results From the ENEIDA Registry. *Inflamm Bowel Dis*. 2019;25(11):1862-70. DOI: 10.1093/ibd/izz084
- Sorrentino D, Marino M, Dassopoulos T, Zarifi D, Del Bianco T. Low Dose Infliximab for Prevention of Postoperative Recurrence of Crohn's Disease: Long Term Follow-Up and Impact of Infliximab Trough Levels and Antibodies to Infliximab. *PLoS One*. 2015;10(12):e0144900. DOI: 10.1371/journal.pone.0144900
- Plevris N, Jenkinson PW, Arnott ID, Jones GR, Lees CW. Higher anti-tumor necrosis factor levels are associated with perianal fistula healing and fistula closure in Crohn's disease. *Eur J Gastroenterol Hepatol*. 2020;32(1):32-7. DOI: 10.1097/MEG.0000000000001561
- Chang S, Malter L, Hudesman D. Disease monitoring in inflammatory bowel disease. *World J Gastroenterol*. 2015;21(40):11246-59. DOI: 10.3748/wjg.v21.i40.11246
- Schoepfer AM, Beglinger C, Straumann A, Trummer M, Vavricka SR, Bruegger LE, et al. Fecal calprotectin correlates more closely with the Simple Endoscopic Score for Crohn's disease (SES-CD) than CRP, blood leukocytes, and the CDAI. *Am J Gastroenterol*. 2010;105(1):162-9. DOI: 10.1038/ajg.2009.545
- Scalaferrri F, D'Ambrosio D, Holleran G, Poscia A, Petito V, Lopetuso L, et al. Body mass index influences infliximab post-infusion levels and correlates with prospective loss of response to the drug in a cohort of inflammatory bowel disease patients under maintenance therapy with infliximab. *PLoS One*. 2017;12(10):e0186575. DOI:10.1371/journal.pone.0186575
- Sánchez-Hernández JG, Pérez-Blanco JS, Rebollo N, Muñoz F, Prieto V, Calvo MV. Biomarkers of disease activity and other factors as predictors of adalimumab pharmacokinetics in inflammatory bowel disease. *Eur J Pharm Sci*. 2020;150:105369. DOI: 10.1016/j.ejps.2020.105369
- Bortlik M, Duricova D, Malickova K, Machkova N, Bouzkova E, Hrdlicka L, et al. Infliximab trough levels may predict sustained response to infliximab in patients with Crohn's disease. *J Crohns Colitis*. 2013;7(9):736-43. DOI: 10.1016/j.crohns.2012.10.019
- Drobne D, Bossuyt P, Breynaert C, Cattaert T, Vande Castele N, Compennolle G, et al. Withdrawal of immunomodulators after co-treatment does not reduce trough level of infliximab in patients with Crohn's disease. *Clin Gastroenterol Hepatol*. 2015;13(3):514-521.e4. DOI: 10.1016/j.cgh.2014.07.027
- Matsumoto T, Motoya S, Watanabe K, Hisamatsu T, Nakase H, Yoshimura N, et al. Adalimumab Monotherapy and a Combination with Azathioprine for Crohn's Disease: A Prospective, Randomized Trial. *J Crohns Colitis*. 2016;10(11):1259-66. DOI: 10.1093/ecco-jcc/jjw15221
- Gorovits B, Baltrukonis DJ, Bhattacharya I, Birchler MA, Finco D, Sikkema D, et al. Immunoassay methods used in clinical studies for the detection of anti-drug antibodies to adalimumab and infliximab. *Clin Exp Immunol*. 2018;192(3):348-65. DOI: 10.1111/cei.13112

32. Nanda KS, Cheifetz AS, Moss AC. Impact of antibodies to infliximab on clinical outcomes and serum infliximab levels in patients with inflammatory bowel disease (IBD): a meta-analysis. *Am J Gastroenterol.* 2013;108(1):40-7; quiz 48. DOI: 10.1038/ajg.2012.363
33. West RL, Zelinkova Z, Wolbink GJ, Kuipers EJ, Stokkers PCF, van der Woude CJ. Immunogenicity negatively influences the outcome of adalimumab treatment in Crohn's disease. *Aliment Pharmacol Ther.* 2008;28(9):1122-6. DOI: 10.1111/j.1365-2036.2008.03828.x
34. Van Stappen T, Vande Castele N, Van Assche G, Ferrante M, Vermeire S, Gils A. Clinical relevance of detecting anti-infliximab antibodies with a drug-tolerant assay: post hoc analysis of the TAXIT trial. *Gut.* 2018;67(5):818-26. DOI: 10.1136/gutjnl-2016-313071